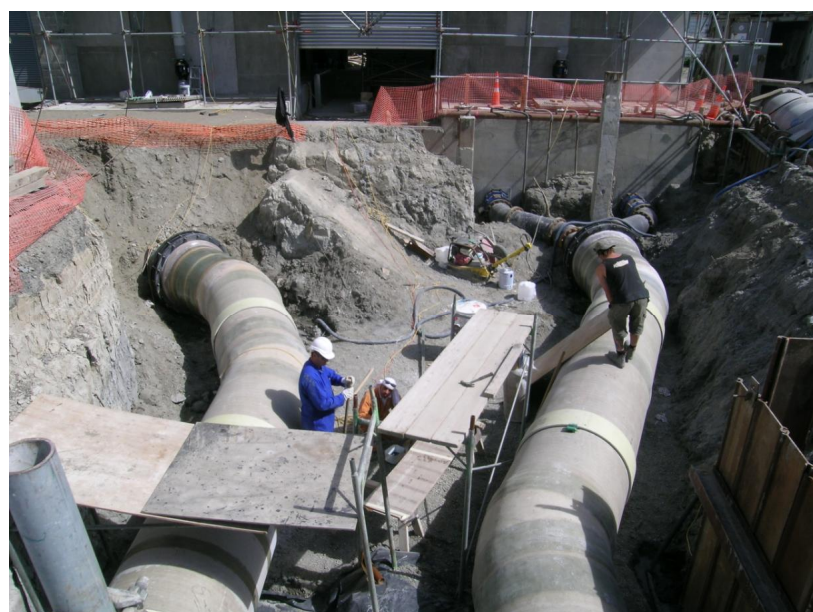


Pressure Sewer Piping

Customer :	Delta, Christchurch City Council
Location :	Bromley, New Zealand
Install Date :	2008
Service :	Sewer Pumping Pipelines
Diameter :	600 to 1200mm diameter

Overview

Fibreglass pipes and fittings were supplied to the Pump Station 11 upgrade. This is the final pump station before the sewer lines go into the Bromley Waste water treatment plant and the existing pump station had to remain operational during the building of the new pump station. GRP pipe was used because of the long lifespan and the ease of site running large diameter pipe from pump station to the valve chamber and then connection with existing underground pipes.



Detail

DN1200 pipe cast into concrete walls with puddle flanges and mitred joints used to lay pipe to valve chamber.

DN1200 pipe from valve chamber to existing pipe with GRP pipe spigot directly into rubber ring jointed concrete pipe.



MASKELL PRODUCTIONS LIMITED

24 Bowden Road, Mt. Wellington, PO Box 11-185, Auckland 5, New Zealand.
Phone +64-9-573-0548, Fax +64-9-573-0666.

Email: don@maskell.co.nz Website: www.maskell.co.nz