

## Pressure Sewer Piping

<b>Customer :</b>	Brian Perry, Hutt Valley Water
<b>Location :</b>	Upper Hutt, New Zealand
<b>Install Date :</b>	2006
<b>Service :</b>	Sewer Pumping Pipelines
<b>Diameter :</b>	300 to 760mm diameter

### Overview

Fibreglass pipes and fittings were supplied to the Silverstream emergency overflow facility.

The pipe work was used to connect the outlet of the pumps to the overflow tank, bell mouth opening were cast into the concrete wall of the tank.



### Detail

DN500 GRP pipes connected via full face GRP flanges to pump outlets, 10m rise to tanks.

DN760 GRP pipe used to deliver to the tanks pipe installed in cradles attached to tank walls.



#### MASKELL PRODUCTIONS LIMITED

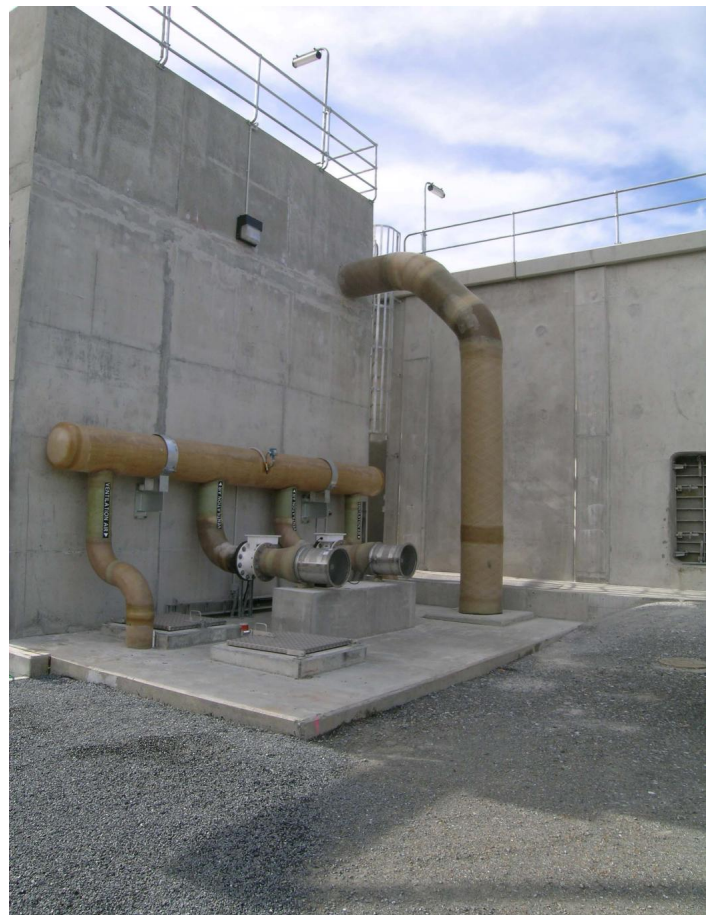
24 Bowden Road, Mt. Wellington, PO Box 11-185, Auckland 5, New Zealand.

Phone +64-9-573-0548, Fax +64-9-573-0666.

Email: don@maskell.co.nz Website: www.maskell.co.nz



DN300 outlet spools connecting to valves and buried pipe.



DN300 ducting for air flow and DN600 overflow pipework.

**MASKELL PRODUCTIONS LIMITED**

24 Bowden Road, Mt. Wellington, PO Box 11-185, Auckland 5, New Zealand.  
Phone +64-9-573-0548, Fax +64-9-573-0666.

Email: [don@maskell.co.nz](mailto:don@maskell.co.nz) Website: [www.maskell.co.nz](http://www.maskell.co.nz)